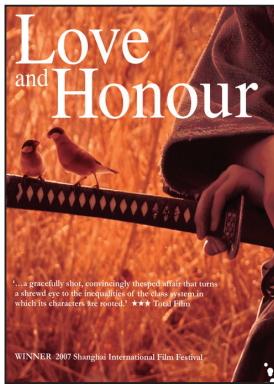


LOVE AND HONOR

2006



Sat 11th August

M - low level violence 121min
TIME: 6pm *Subtitled

Third in the acclaimed Twilight Samurai trilogy by director Yoji Yamadas following a blind man's struggle to find peace of mind as he tries to follow his Samurai code.

Starring Takuya Kimura.

ICHI

2008



Sat 11th August

R16 (tbc) 120min
TIME: 6pm *Subtitled

A spin off from the Zatoichi legend, traditionally set in the Edo period, of a blind, wandering musician who, as a girl, was trained in the art of one-handed sword fighting and who now searches for her father. Director Fumihiko Sori. Starring Award Winning actress Haruka Ayase.

ONE MISSED CALL

2003



Sat 11th August *Subtitled

R16 - Horror scenes and violence
TIME: 8.30pm 112min

Several people start receiving voice-mails from their future selves -- messages which include the date, time, and some of the details of their deaths.

Directed by Takashi Miike from the novel by Minako Daira.

Advance Bookings

Advance bookings are available for all sessions using your credit card either live online or by phoning 03 548 3885 ext 1. Door Sales at the Suter Cinema from 15mins before the start time of each movie. Tickets are also available for purchase over the counter at State Cinemas. Pre booked tickets may be collected from our Self Ticketing Kiosks in the foyer of State Cinemas.

Session Times

A full schedule of the screening times for each day is listed in this flyer and will be advertised in the Nelson Mail daily. Also the movie session schedule will be on the Suter Movie Info Line **548 0808**. As we don't run shorts, ads or trailers the advertised start time is the time the feature will actually start, so please plan to be seated by the advertised start time.

We reserve the right to change the schedule if necessary.

Ticket Prices

Adults (\$12.00 for sessions beginning before 5pm)	\$15.00
Students (ID required) (after 5pm excluding Friday & Saturday)	\$12.00
Senior Citizens (65 years +)	\$ 9.50
Children (under 16)	\$ 9.50
Family Pass (2xAd & 2xCh or 1xAD & 4xCh)	\$42.00

Location: Suter Art Gallery, 208 Bridge Street, Nelson
Website: www.statecinemas.co.nz (**Suter Page**)
Phone 03 548 3885 for bookings and information

Hosted by the Nelson Japanese Society and State Cinemas
In association with the Embassy of Japan

Also sponsored by:

Nelson Miyazu Sister City Assoc
Sealord Group Ltd
Blackenbrook Vineyard
Stefano's Pizzeria and Bar
The Sushi House
Urban Hippie



第一回ネルソン日本映画祭

2012

Nelson
Japanese
Film Festival

Celebrating the 60th Anniversary of
Japan-New Zealand Diplomatic Relations

WELCOME

Welcome to Nelson's first Japanese Film Festival hosted by State Cinemas in partnership with the Nelson Japanese Society and in association with the Embassy of Japan. In selecting the films we have included a range of titles popular within Japan with a view to showing a snapshot of Japanese local film culture to Nelson audiences. So while there are internationally critically acclaimed titles in the lineup, there are also titles that you would expect to see showing at local cinemas throughout Japan.

We would like to express our thanks to the Nelson Japanese Society for initiating the idea for this festival and for organising much of the opening night Gala Event, and to all the sponsors for their generous support.

GALA OPENING Friday 10th August

STILL WALKING (2008) All tickets \$20 (includes supper)
Doors open for supper: 7pm Movie starts at 8pm

The subtly beautiful portrait of a family unfolding over the course of a single summer's day, as they commemorate the death of the eldest son. Written & Directed by Hirokazu Koreeda. PG *128min

ROKKU:WANKO NO SHIMA 2011



FREE MOVIE!
Kindly supplied by the Embassy Of Japan
Advance bookings can only be made over the counter. No online or phone reservations

WANKO: THE STORY OF ME, MY FAMILY AND ROCK

Sat 11th August

PG 123min

TIME: 10.45am *Subtitled

Based on a true story of the residents of the small volcanic island of Miyakejima, evacuated in 2000. During the evacuation the family's puppy is lost and so begins a heartwarming journey to reunite the family with their home and their beloved dog 'Rock'.

MY NEIGHBOUR TOTORO 1988



Sat 11th August

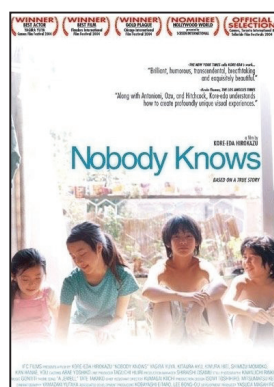
PG 86min

TIME: 1.15pm *Subtitled

After a move to the country, two little girls encounter friendly wood spirits and Totoro – the giant guardian of the forest.

From the Academy Award winning director of 'Spirited Away' & 'Princess Mononoke', Hayao Miyazaki.

NOBODY KNOWS 2004



Sat 11th August

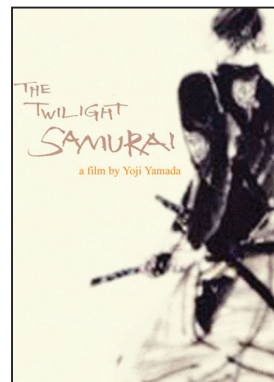
PG - Adult themes 141min

TIME: 3.15pm *Subtitled

Award winning film based on a true story by director Hirokazu Koreeda.

Four children aged between five and twelve are forced to survive on their own after their mother abandons them. The film is shot on a handy-cam lending the film a realism and giving it the feel of a documentary.

THE TWILIGHT SAMURAI 2002



Sat 11th August 124min

M - Medium level violence

TIME: 6pm *Subtitled

Winner of 12 Japanese Academy Awards including Best Picture.

First of a Trilogy by director Yoji Yamada about a low ranking Samurai who tries to protect a battered wife. Set in the late Edo period, when the time of the Samurai was nearing its end.

Starring Hiroyuki Sanada.

GOEMON 2009



Sat 11th August

R16 - Violence 128min

TIME: 8.30pm *Subtitled

Based on the legend of outlaw and hero Ishikawa Goemon. With over 2500 CGI effects, director Kazuaki Kiriya has created a fast action Ninja thriller which is almost 'game-like' in intensity.

Starring Yôsuke Eguchi.

SUMMER WARS 2009



Sun 12th August

PG - Violence 114min

TIME: 10.45am *Subtitled

Mamoru Hosoda's award winning science fiction, cyber-punk, teen romance, thriller - all rolled up into one lavishly beautiful Anime.

A student tries to fix a problem he accidentally caused in a digital world, while pretending to be the fiancé of his friend at her grandmother's 90th birthday.

ALWAYS - SUNSET ON THIRD STREET 2005



Sun 12th August 133min

PG - Low level offensive language

TIME: 13.34pm *Subtitled

The first in a Trilogy by director Takashi Yamazaki based on a long running 'manga' comic series "Sancho-me no Yûhi".

Set in post war Tokyo. Following the interweaving lives of a number of the community's residents.